

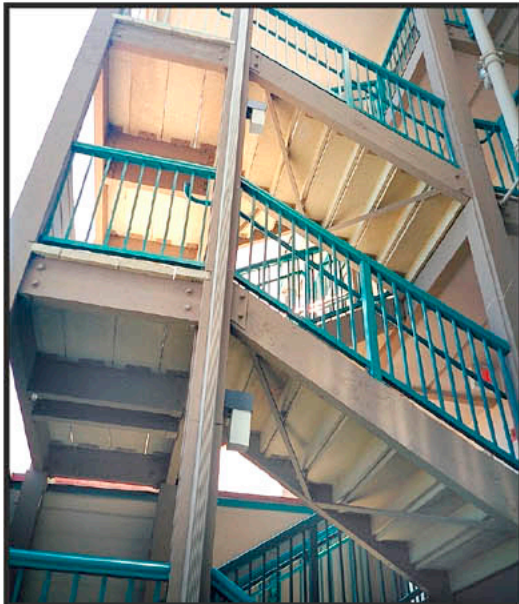
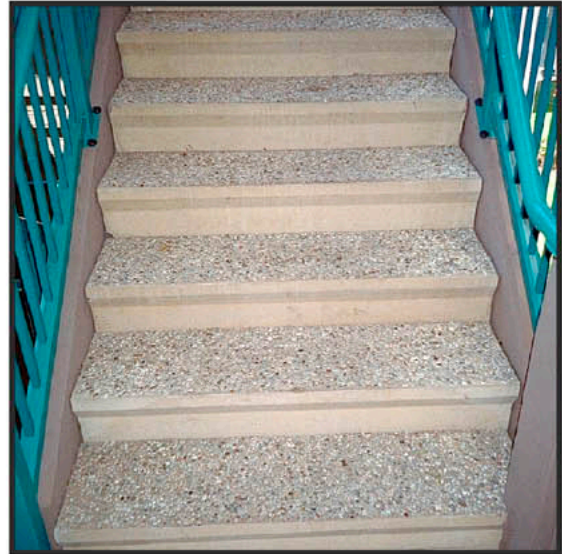
# STEPTREAD JOB REPORT

## *WorldMark The Club*

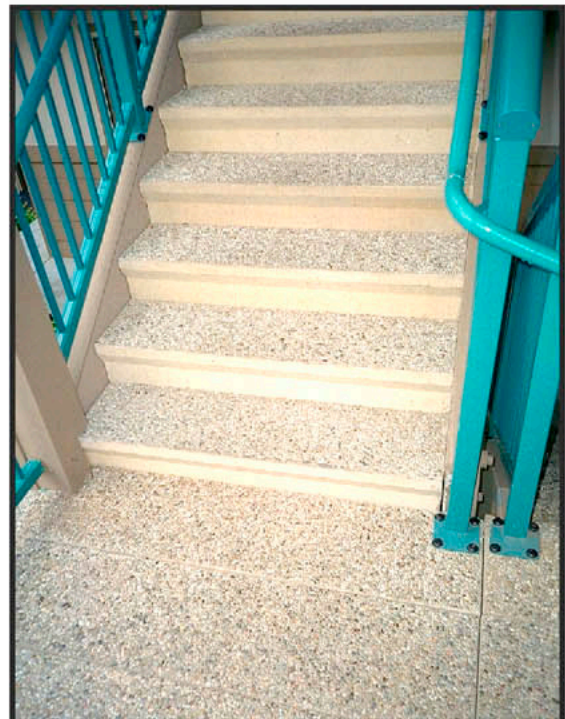
5949 Alii Drive, Kona



This popular time share used Closed-Riser STEPTREADS on their Kona project. Dynamic sales resulted in a much larger STEPTREAD project: WorldMark at Kihei, (Maui) completed in late 2000.



Either from the top or bottom, you can hardly see the recessed fastening system. The treads are walkable with bare feet, helpful since this is across from the beach.



The matching landing planks transition smoothly to the four floors. Posts are attached to plates embedded in the landing plank.

**BUILDING SYSTEMS HAWAII 800-353-0934**