

# Sandblast Colors

Please note: To confirm color, see actual color concrete samples before ordering. Colors in brochure may vary from cast concrete pieces.

CALARC DIV. ARCHITECTURAL PRECAST CONCRETE PRODUCTS



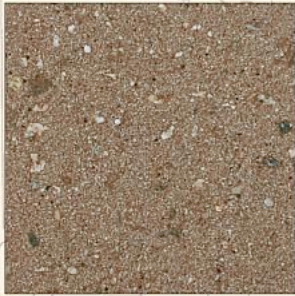
1808 Espresso Brown



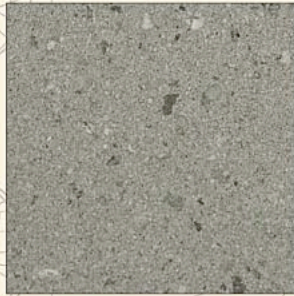
1804 French Gray



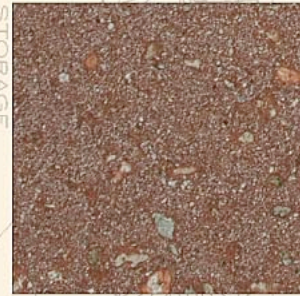
1809 Malibu



1807 Cafe Brown



1813 Porcelain



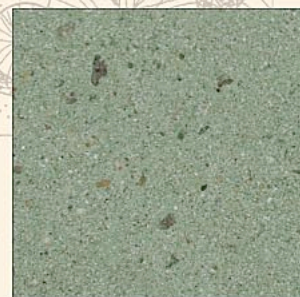
1816 Brick Red



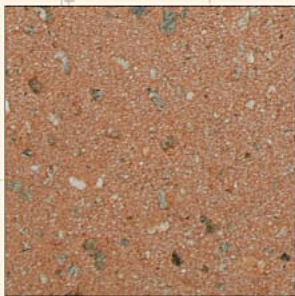
1810 Caramel



1801 Granada White



1805 Iceberg Green



1803 Santa Fe Buff



1806 Almond



1812 Agave Green

**BUILDING SYSTEMS Hawaii**

Hawaii distributor for STEPSTONE INC.

800 353 0934 • [bsystems@kona.net](mailto:bsystems@kona.net) • web: [buildingsystemshawaii.com](http://buildingsystemshawaii.com)