

Roof Pavers™

CALARC DIV. ARCHITECTURAL PRECAST CONCRETE PRODUCTS

Reinforced Roof Pavers, Pedestal Supported (22 psf), are steel reinforced and carry the span to independent adjustable pedestals at the corners. These pedestal supported pavers allow you to have a flat, level paved surface which compensates for the slope of the roof.

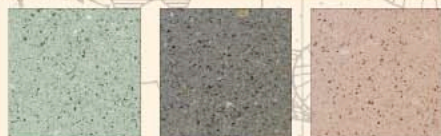
Drydeck™ Pavers (22 psf) are uniquely designed. A polystyrene pedestal (60 pound density) is cast into each corner to raise the paver 1/2" off the water proof surface allowing drainage under the roof pavers.

Lightweight Roof Pavers (12 psf) were invented for applications where an existing roof or new roof requires a lighter load. Cast with 1" of concrete laminated to 1 1/2" of expanded polystyrene foam, these pavers have the look of a full weight roof paver but weigh in at half the load.

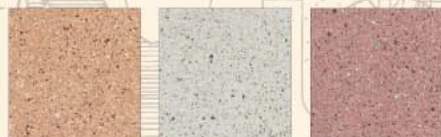
Rooftrac Pavers (30 psf) are a planking system that creates a runway around the roof perimeter to ease the movement of the window washing equipment.

Stepstone offers unique solutions to your perimeter installations. See details.

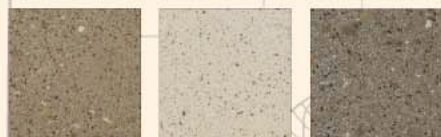
CalArc Colors*



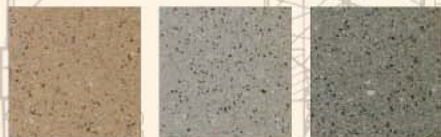
1405 Iceberg Green 1404 French Gray 1409 Malibu



1403 Santa Fe Buff 1401 Granada White 1402 Sunset Rose



1407 Cafe Brown 1406 Almond 1408 Espresso Brown



1410 Caramel 1413 Porcelain 1412 Agave Green

Short Form Specification:

Material: 5,000 PSI Hardrock Concrete

Finishes: Fine Grain Stipple, Sandblast & Sonorastone®

Size*: 24" x 24" x 2"
See details for additional sizes

*All Sizes are Nominal

*See actual color concrete samples before ordering. Roof Pavers are hand formed of natural materials. Variations in color are to be expected. Some minor chipping may result from shipping, but is not detrimental to appearance or function. This material is copyrighted and is intended solely for the use of customers of Stepstone, Inc.

Stepstone proudly distributes the following pedestal systems: BISON, APPIAN & PAVE-EL

BUILDING SYSTEMS Hawaii

Hawaii distributor for STEPSTONE INC.

800 353 0934 • bsystems@kona.net • web: buildingsystemshawaii.com