

# Exposed Aggregate Concrete Paver Tiles by STEPSTONE, INC

## Distinctive Landings & Runways to Match Your STEPTREADS

Specs: 5,000 PSI Hardrock Concrete. Embedded with Del Rio exposed aggregate from our quarry in California. (No epoxy!) Stain repellent sealer is factory applied, with a 5 year life expectancy. Typically 1" X 12 X 12, weighing 11#. They're walkable with bare feet, yet anti-slip. Alternate aggregate surface is available not exposing the aggregate as much, making the concrete color more prominent, which is even easier on bare feet. Normal maintenance would be once or twice yearly medium power wash.

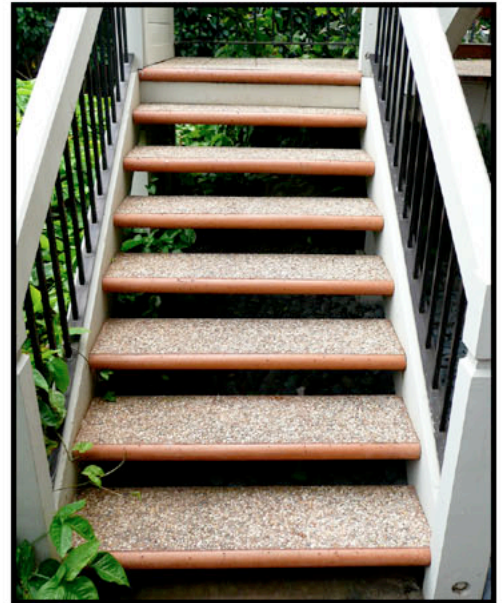
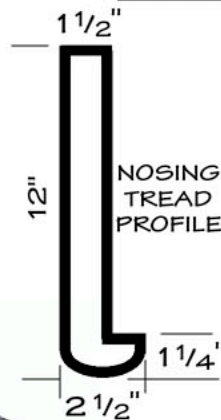


11 3/4" X 11 3/4" X 1" Hawaiian Sand color

## Job Profile: One Napili Way

5355 Lwr. Honopiilani Rd./Maui  
Resident Mgr: Dan Williams (669 2007)

To rehab an existing landing, in this case the tiles were removed, then a nosing tread is thinset down. Next goes a 1/4" or 1/2" concrete board on the landing, then paver tiles are thinset to the board. Color: Caramel



**BUILDING SYSTEMS HAWAII**

800 353-0934 • 808 885-0987