

STEPTREAD Job TOUR

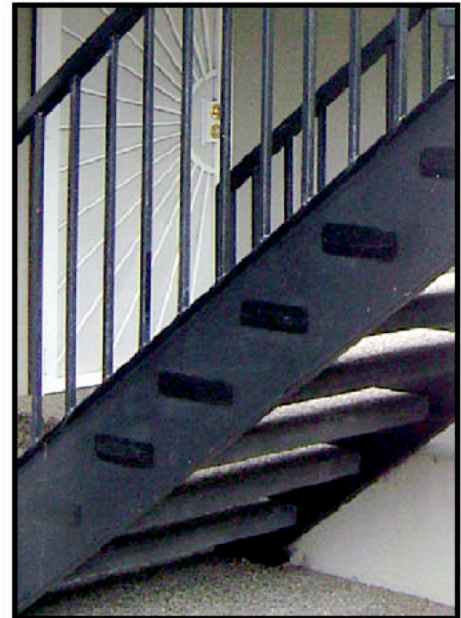
Nuuanu Streamside



Here's **NUUANU STREAMSIDE**, at 1649 Waikahalulu Ln, Nuuanu, Honolulu.

Previous treads were steel pans filled with concrete, which had spalled due to water filling the pans & rusting out. They were torched out, and replaced with Precast Concrete STEPTREADS which *Can't Rust!*

Steel pans are a much more expensive alternative, are much less attractive, are messy to fill with concrete, and will always rust out eventually. Our weld-to-steel OR bolt-to-steel hardware makes the job easy.



A close-up of the French Gray STEPTREADS, in our Del Rio exposed aggregate. (Hawaiian Texture wasn't an option back then . . .)

Existing steel channels were repainted. See below for view from bottom, with our special galvanized angles welded to the channels, then the STEPTREADS bolted to the angles. A laborer can do this final step of the installation, rather than another day charged by a welder.



BUILDING SYSTEMS HAWAII
808 885-0987 800 353-0934