

# STEPTREAD Job Tour

## Kamanu Center

73-5618 Maiau St. Kona, Hawaii (directly above Costco)

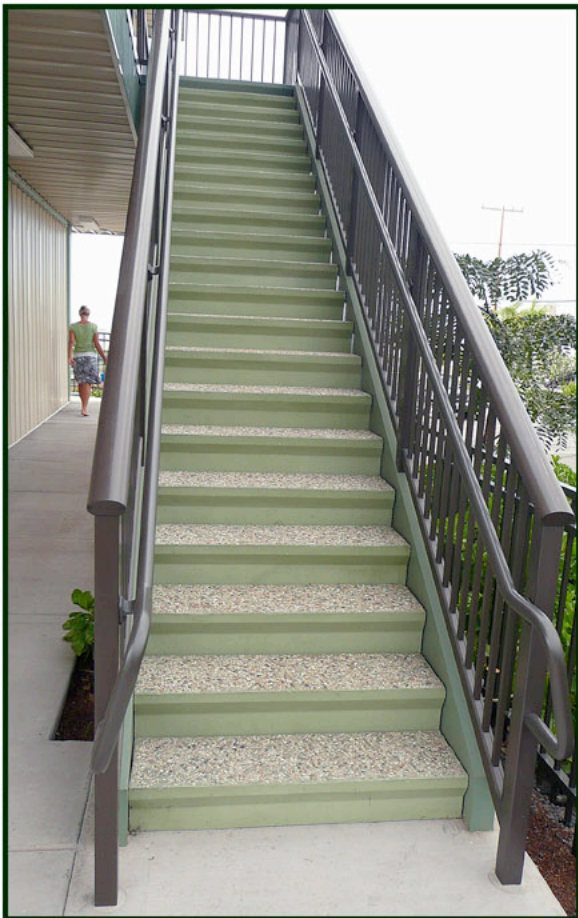
This 2 story steel office/warehouse/ showroom was built in 2006 by owner-contractor Keven Rinkenbach, GC, dba S & R Construction, who builds on all islands (808 325 5106). Keven says the inviting 4 sets of stairs to the 2nd floor of this 45' X 300' building have helped keep his project rented in these tough times, and have remained maintenance-free since.



Closed-Riser STEPTREADS were used, with our unique bolt-to-steel recessed hardware. Angles are welded to stringers at the fabricator's plant, then the treads are bolted to the angles on site without welder.



The transition to the top runway is with this top nosing step, set at height of landing. Iceberg Green is one of the many colors offered.



Painting out the underside blends the steel stringers with underside of the treads and hardware.



# BUILDING SYSTEMS HAWAII

email: [bsystems@kona.net](mailto:bsystems@kona.net) • web: [buildingsystemshawaii.com](http://buildingsystemshawaii.com)

