

STEPTREAD JOB REPORT- Kahului Apartments

JOB: Kahului Apartments, now known Kahului Ikena. Affordable rental housing complex, S. Papa Ave., Kahului, Maui

Completion: April 1995

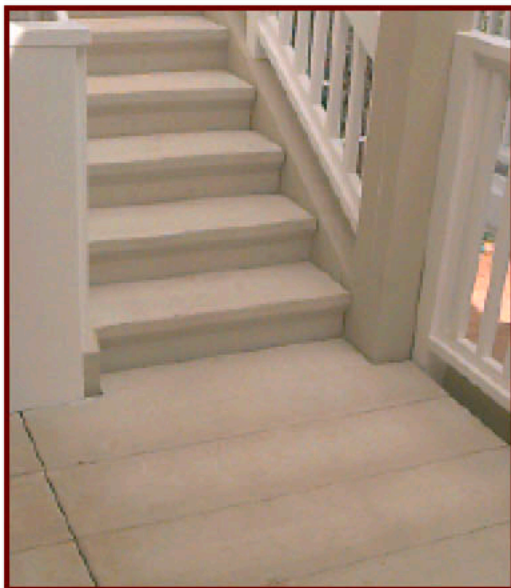
Contractor: Hawaiian Dredging Construction

Project Manager: Jerry Kusunoki

Developer: A & B Properties Inc: Mike Wright, Paul Allen

Architect: KTG Group, Jill Williams, AIA, Irvine, California

Comments from Jerry Kusunoki Feb. '95: "Your tread system was the ideal solution to our fire-rating problem with a 3 story building. Since we also used your matching precast planks for all our landings and runways-over 2,000 pieces-the knowledgeable technical help we got from your manufacturer, Stepstone, Inc., has been invaluable. The protective covers are a great idea, really protecting the treads during construction. We cut them off after final painting of the stringers."



Type of finish: Natural color, broom finish. A walk-through inspection in 2006 didn't turn up a single crack or chip in treads or nosings!

Closed-riser **STEPTREADS**. Bolt-on to wood. 6X wood stringers and posts required.

Left photo: note how the landing system ties in to the tread run. Block outs were spec'd in the plans, and done during manufacture. Field modifications were minimum. Recessed hardware barely shows. Right photo from underneath: treads and stringers were painted out for visual uniformity.



Hawaii Distributor:

BUILDING SYSTEMS HAWAII

808 885-0987 • 800 353-0934