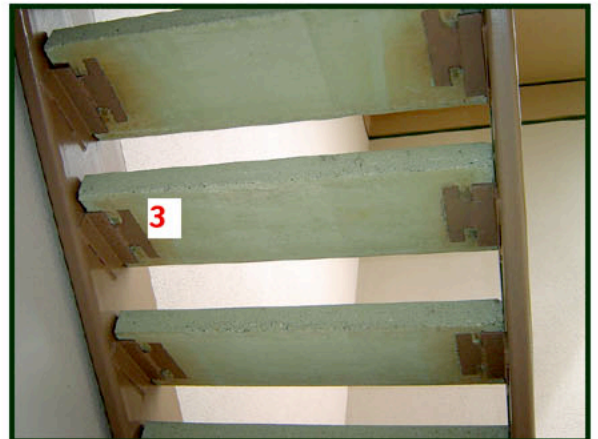


STEPTREAD Job Tour

JMD Beverages-- inside an upscale warehouse

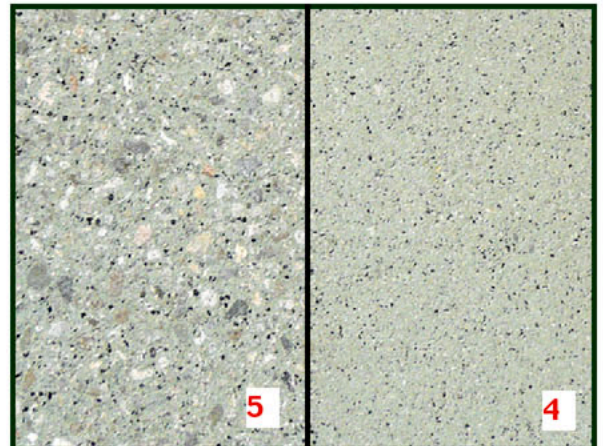
Here's the stair system inside JMD Beverages (think Budwiser. . .)
771 Eha St, Wailuku, Maui. Project began in late 1994. Features STEPSTONE'S
Weld-to-Steel Stringers system, with matching landing pavers at top.



1 Open-Riser bull-nosed STEPTREADS were used, with light sand blast finish, in IceBerg Green color.

2 The top landing consisted of matching Cal Arch pavers, same finish. **4** at right is closeup of the sand blasted finished tread. (A heavier sandblast could also be used, exposing rougher decorative aggregate., shown on left side sample **5**)

3 Steel stringers were used, so Steptreads were cast with embedded weldplates. Typically a fabricator would use an L shaped angle, rather than this tab angle which isn't needed for support. Underneath is typically painted afterwards, concealing the hardware. But after all, this is a warehouse! But if it were a showroom upstairs . . .



Made by **STEPSTONE INC**

Distributed in Hawaii by:

BUILDING SYSTEMS HAWAII

email: bsystems@kona.net • web: buildingsystemshawaii.com