

# STREPTREAD Job Tour

## Hilton KingsLand Waikoloa

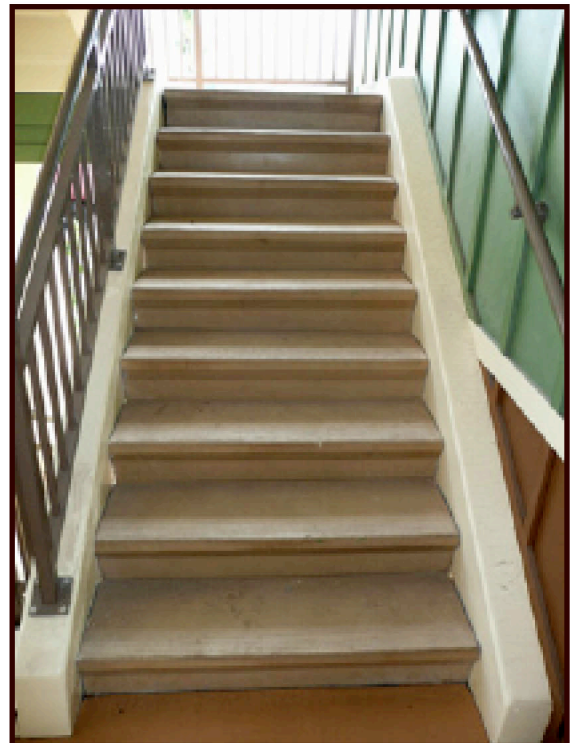
Largest Timeshare Project on the Big Isle



Planned in 5 phases, the 4 buildings of Phase 1 opened in '08. Phase 2 was completed in 2012. Phase 3 followed up in 2015. All 3 phases were done by dck Pacific. 2 more to go !

Precast Strepreads are being used: Closed-Riser, Broom Finish, Hawaiian Sand color. Galvanized hardware concealed in the recessed pocket, mounts treads to wood stringers.

Contractors appreciate the ease of installation. Owners enjoy the quiet of precast concrete stairs.



**BUILDING SYSTEMS HAWAII 800 353-0934**

EXCLUSIVE HAWAII DISTRIBUTOR of STREPTREADS by STEPSTONE INC.