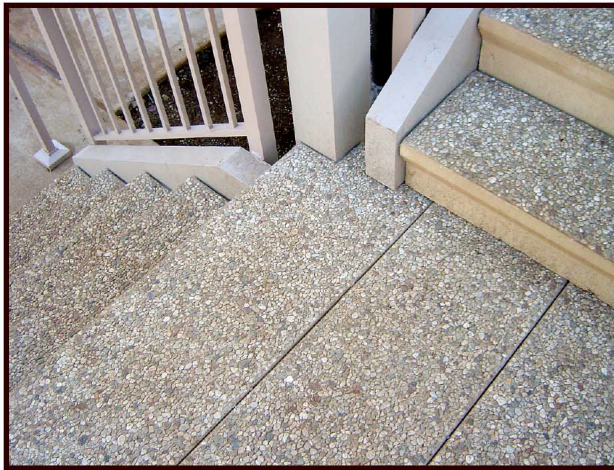
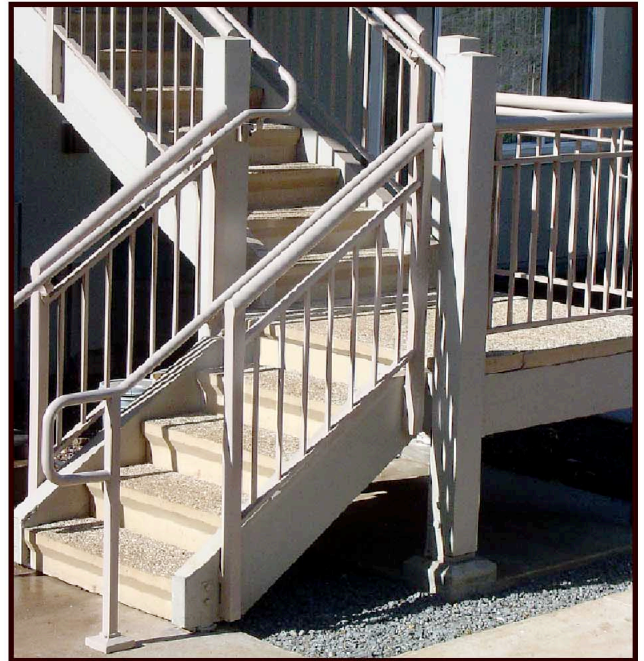


STEPTREAD Job TOUR

Hale O Mana'o 325 Mahalani St. Wailuku/Maui

Here's HALE O MANA'O, a HUD project in Wailuku. Construction was completed in '04 (after about 3 years getting HUD approvals to start!)

Contractor: Dugied Construction.



Looking from underneath, which was painted to add uniformity & concealment. Look for the recessed hardware!



COLOR:
"Hawaiian Sand".
Del Rio Exposed
Aggregate

These are Closed-Riser STEPTREADS by **Stepstone, Inc**, with matching 90° mid landings. Factory cutouts in the landing planks eliminated on-site cutting. Painting is forever never!

Recessed galvanized hardware bolts to the 4X14 wood framing. Many different landing options are doable.

BUILDING SYSTEMS HAWAII 800 353-0934
web: buildingsystemshawaii.com