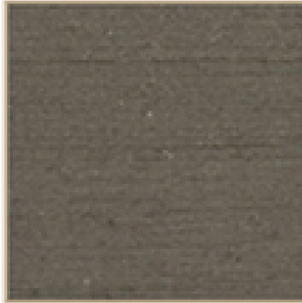


Broom Finish Colors

Broom is the most popular of Stepstone's finishes for Stair Treads. Wet concrete is brushed lightly to create striations resulting in this slip resistant surface.

In Hawaii, Stepstone's Exposed Aggregate has been the most popular. But that is changing with building codes now requiring visibility stripes on more jobs. Stripes consist of a 2" band of small contrasting aggregate, embedded during casting, embedded in a broomed or sand-blasted surface--not doable over exposed agg.

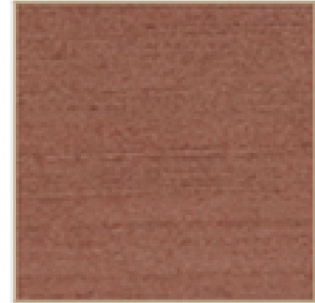
Stepstone Inc. will furnish actual color slices, much more reliable than graphic reproductions which vary from monitor to monitor, let alone from cast concrete pieces. Then you can see and feel the fine qualities of these unique products.



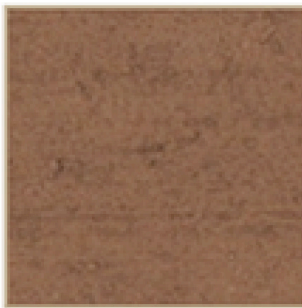
Agave 512



Hawaiian Sand
(aka Almond) 506



Brick Red 516



Cafe Brown 507



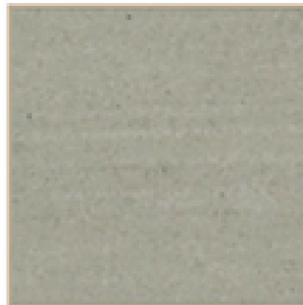
Caramel 510



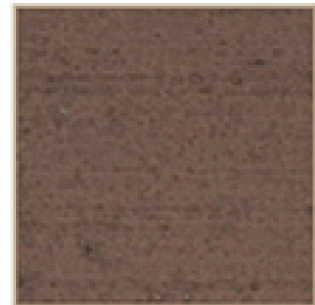
French Gray 504



Granada White 501



Iceberg Green 505



Kona 521



Espresso



Porcelain 513



Santa Fe Buff 503