

STEPTREAD Job Tour



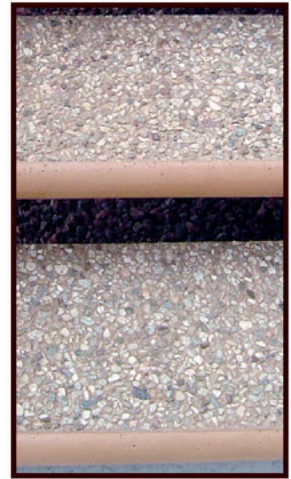
Alii Cove
75-5919 Alii Drive, Kona

Here's Alii Cove on Alii Drive in Kona, finishing in '06. Sequel to Kona Sea Villas, which sold out quickly by developer Sunstone Builders.

Sandy Beige STEPTREADS with bullnose were used, with matching intermediate landings.

Condo managers like the minimum maintenance. Owners like the appearance and resale values. Contractors like the easy installation.

Contractor: Bodell Construction.



Close up shows surface which is walkable with bare feet, yet non-slip.



Construction covers eliminate temporaries during construction, then are removed after final painting.



Factory cutouts in the 90 degree mid landing eliminate on-site cutting. Recessed hardware matches your supports. The protruding bullnose safely delineates walking down.

