

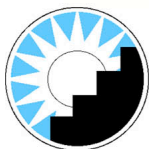
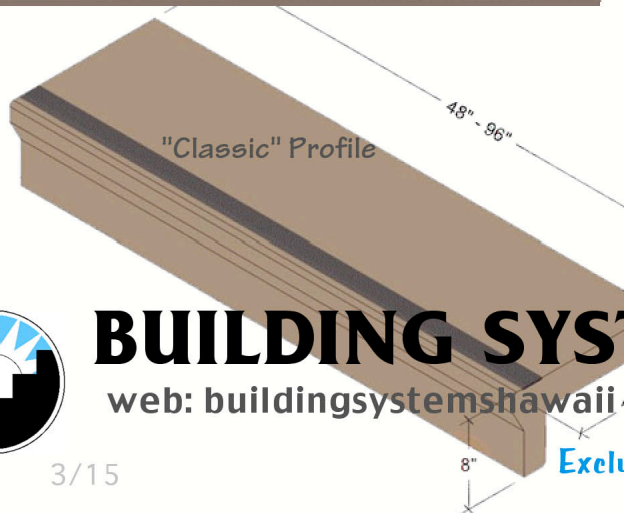
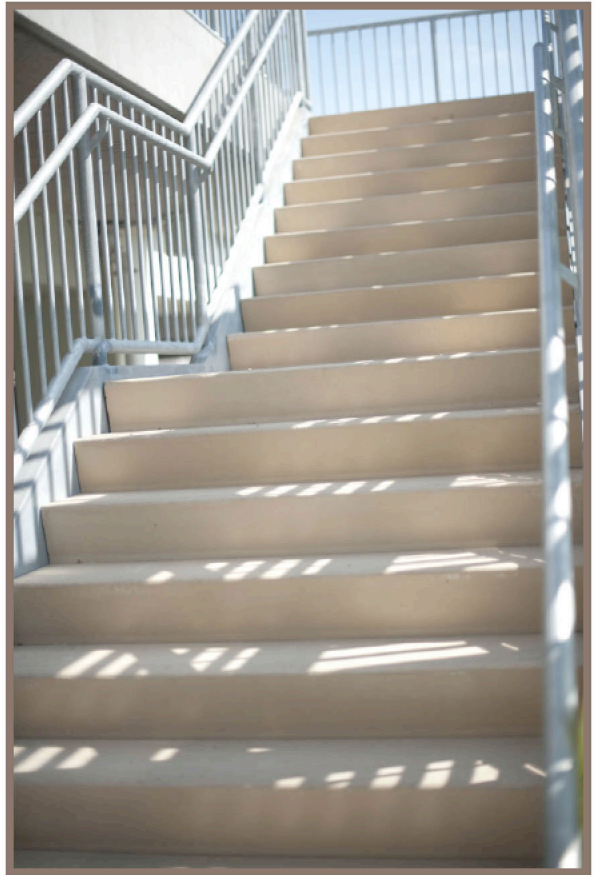
STREPTREAD Job Tour/AlaMoana Parking Garage

This stair system by Hawaiian Dredging Const. connects many levels of the new Ewa parking garage of Ala Moana Center. Over 200 Long Span Strepreads by Stepstone Inc, each 5' long, and 12 matching mid landings, were welded to steel stringers. Color: Hawaiian Sand, with broom finish.



Black integral aggregate visibility stripes were spec'd at the top, mid landing, and bottom of each run. "Modern" Profile gives a clean, contemporary look.

Above is the tread transitioning to the mid-landing. Below is the top tread, butting to the top runway.



BUILDING SYSTEMS HAWAII

web: buildingsystemshawaii.com • ph: 800 353-0934

Exclusive Hawaii STEPSTONE Distributor