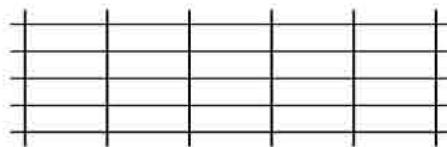
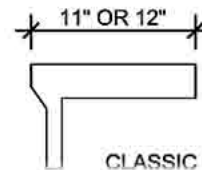
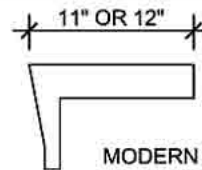
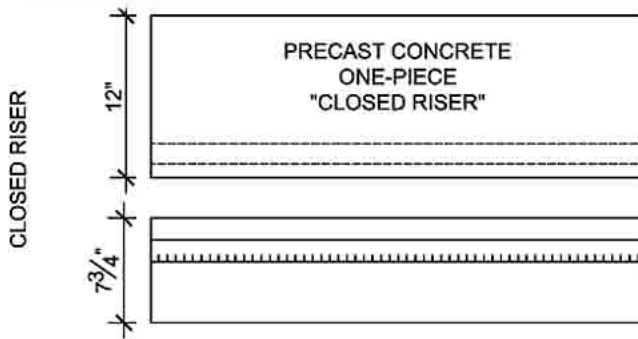


Closed-Riser STEPTREAD Wood Bolt-On System Components

LENGTH TO SUIT TO 48". EXTRA COST TO 60". (Length should be 3/8" less than between stringers)

LANDINGS ARE SEGMENTAL, AND ARE QUOTED FOR THE ENTIRE LANDING INCLUDING BLOCKOUTS



2" x 6" - #7 X #10 ZINC PLATED WELDED WIRE MESH FOR "STEPTREADS", LANDING & RISER



MODERN PROFILE STARTER NOSING



CLASSIC PROFILE STARTER NOSING

PRECAST CONCRETE TREADS AND LANDINGS SHOWN ON PLANS SHALL BE FROM THE "STEPTREAD" SYSTEM BY STEPSTONE, INC. OF GARDENA, CA, FOR WOOD CONSTRUCTION. THE MANUFACTURER IS TO SUPPLY ALL PRECAST CONCRETE PARTS WITH EACH "STEPTREAD" INCLUDING ALL GALVANIZED HARDWARE SHOWN IN THIS SERIES, TO ATTACH SAME.

